



ExCITE

Exchangeable Cooling IT and Telecom Enclosure

APPLICATION

ExCITE is tailored to be used in several different applications in Telecommunication or Industrial Networks applications such as:

- Radio Access Network (3G,4G/LTE/WiMAX)
- Power Distribution
- Scada
- Cable TV
- Optical Fibre Transmission System
- Rail and Metro

Strong Points

Easy installation

IP55/NEMA4

Fast delivery

Cost effective

Heavy Duty

19" to 23" rack mount Active or Passive Equipment can be installed on the rail and will be protected against dust, rain, snow, and insect penetration. LED service light is installed on the Enclosure ceiling to light up the enclosure space and surroundings. Smoke detector is also installed to create alarm when there is smoke inside ExCITE.

WHY ExCITE?

ExCITE family has three different cooling systems (Air Conditioner, Heat Exchanger and Free Air Cooling) which can be easily changed by changing the enclosure door as any of the cooling systems are designed to be installed on the cabinet door. Cooling system maintenance is also very easily done by opening the enclosure door and accessing the cooling system.

THERMAL MANAGEMENT OPTION

Air Conditioner:

- DC powered 300W to 3000W cooling capacity available w/wo integrated heater
- AC powered 520W to 5000W cooling capacity available w/wo integrated heater

Heat Exchanger:

- 80W/K DC powered Heat Exchanger
- 100W/K DC powered Heat Exchanger
- 120W/K DC powered Heat Exchanger
- 150W/K DC powered Heat Exchanger
- 180W/K DC powered Heat Exchanger

Free Air Cooling:

- DC and AC powered FAC in any range available

Fan heater:

- DC and AC powered Fan Heater in any range available

Hybrid Cooling:

- Any combination of Free Air Cooling, Air Conditioner and Heat Exchanger available

FEATURES AND BENEFITS

- Aluminium made body on steel structure
- Electrostatic Polyester powder Coated
- Multi point locking mechanism
- IP55 / NEMA4
- Cabinet walls are insulated by PIR insulating material
- Smoke detector
- LED service light
- Multiple methods for Cable Entry
- Back door option available
- Different Plinth height available

ADDITIONAL SERVICES

Service Panel

There is an option to install a service panel based on your needs as following:

- Single Phase or Three Phase (110V/208V/240V)
- Amperage is customizable
- Circuit breakers are customizable

Meter Base

It is also available to install a single/three phase Meter Base in any amperage is needed.

DC Power System

we understand that time is of the essence when it comes to installation and commissioning of your equipment. That's why we offer the convenience of pre-installing your devices inside the ExCITE cabinets and wiring them to your exact specifications. With this service, you can rest assured that your product is fully certified, and all necessary tests have been conducted before delivery. This approach allows for a smoother and more efficient process, saving you time and money while ensuring your equipment is up and running as soon as possible.

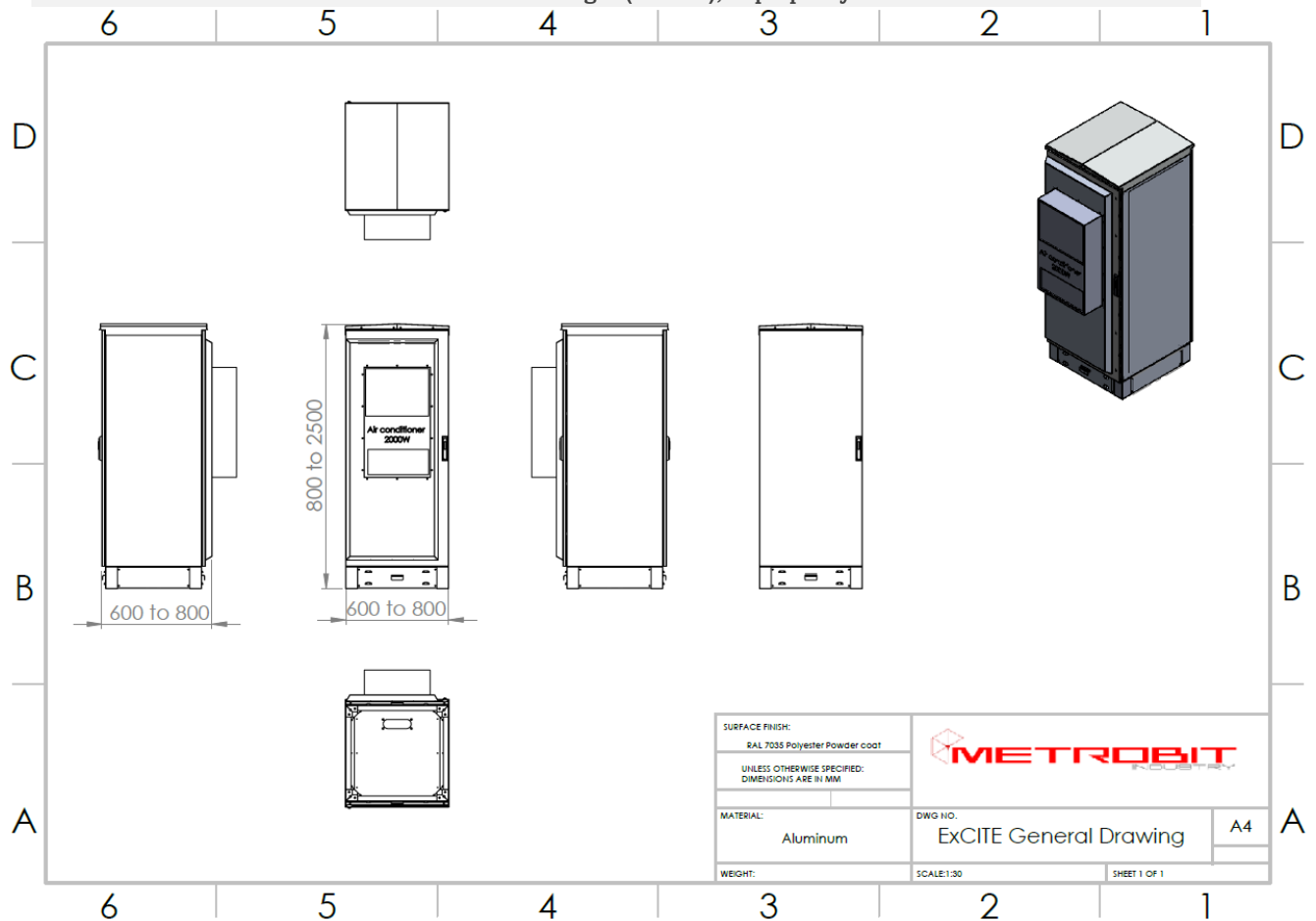
AC Receptacle

To power on an external Fan Heater during maintenance in cold weather, an AC 120V/240V Receptacle can be installed upon your request.



TECHNICAL SPECIFICATION

Physical Characteristics	
Width (mm)	600 to 800
Depth (mm)	600 to 800
Height (mm)	800 to 2500
Weight (kg)	Depends on the dimension and equipment inside
Rack Space	10 to 48 RU
Mechanical Characteristics	
Body Material	Aluminum (corrosion resistance)
Structure Material	Stainless Steel
Coating	Electrostatic Polyester Powder Coat
Door Features	
Locking	Multi-point locking (various options available)
Gasket	Rated for outdoor use
Door Stop	Wind stop to hold door during maintenance (120°)
Other Characteristics	
Thermal Insulation	Various options available
Cable Entry	Various options available
Battery Trays	Optional battery tray(s) with battery breakers
Plinth	Plinth covers accessible from 4 sides
Ground Busbar	5x M6 & 4x M8
Lifting eyes	4x Lifting positions fitted under the top cover
General Options	Back Door, Door switch, Document pocket, Smoke detector (48VDC), LED Service light (48VDC), Laptop tray



ORDERING INFORMATION



- | | | |
|---|--|--|
| <p>1 EIA RAIL Standard Distance (in)
19 = 19"
21 = 21"
23 = 23"</p> <p>2 Cabinet Width (cm)
60 ≤ x ≤ 80</p> <p>3 Cabinet Depth (cm)
60 ≤ x ≤ 80</p> <p>4 # of Rack Units
10 ≤ x ≤ 48</p> <p>5 AC or DC Powered
A = AC Powered
D = DC Powered</p> | <p>6 Air Conditioner Capacity
OR = 300W
OS = 500W
OT = 600W
10 = 1000W
15 = 1500W
20 = 2000W
30 = 3000W
50 = 5000W
00 = None</p> <p>7 Heat Exchanger Capacity
08 = 80W/K
10 = 105W/K
12 = 120W/K
15 = 150W/K
18 = 180W/K
00 = None</p> | <p>8 Heating System
F = Fan Heater
0 = None</p> <p>9 # of Battery Trays
0 ≤ x ≤ 6</p> <p>10 General Options
0 = None
1 = Smoke Detector, LED, Back Door
2 = Smoke Detector, LED
3 = Back Door</p> |
|---|--|--|

PART NUMBER EXAMPLE

Part Number	Description
ExCITE-197080-38U-D2000F-2B-0	19" Rack, Width 700mm, Depth 800mm, 38 RU, DC powered Air Conditioner 2000W, no Heat Exchanger, with Free Air Cooling, 2 Battery Trays and no Fan Heater